

Health, Safety, Environment and Quality

A large amount of diligence, planning and risk management is done to ensure that the health and safety of all persons involved in our surveys are protected.

Our Health, Safety and Environmental Management System meets the international standard OHSAS 18001-2007 and our quality policy respects major standards ASTM, BS and NF EN ISO.



Contacts

UK : Coralie Castel

coralie@stratagem974-uk.com

+44 79 2011 3097 / Skype : coralie.castel

South Africa : Karl Facciotti

karl@stratagem974-za.com +27 826 008 413

Madagascar : Maxime Caruel

maxime@stratagem974-mg.com +261 320 720 403

Reunion Island : Eric Delcher, CEO

delcher@stratagem974.com +262 692 266 062

France : JN Fourcade

contact@stratagem974.com +33 687 157 761

www.stratagem974.com www.facebook.com/stratagem974

Geophysical Surveys for Mining Exploration



About us **STRATAGEM974** is a company specialized in research, development and application of high tech solutions for geosciences, with a high level of skills in ground geophysics.

Our team is made of dynamic scientists and engineers (28-42), with a worldwide experience and a continuous link with research institutes (Colorado School of Mines, IPGP, BRGM, INGV, USGS).

What we do : we are specialized in geophysical surveys in remote areas. We perform data acquisition, processing and interpretation.

Where we are & Where we go : our branches in the United Kingdom, South Africa, Madagascar, Reunion Island, France and Australia allow for a strong client-surveyors relationship and a rapid intervention worldwide.

About Ore Exploration

When airborne and classic surveys are not able to give accurate data to delineate ore bodies, we have the solutions : high density ERT, IP and MT methods

Data Acquisition

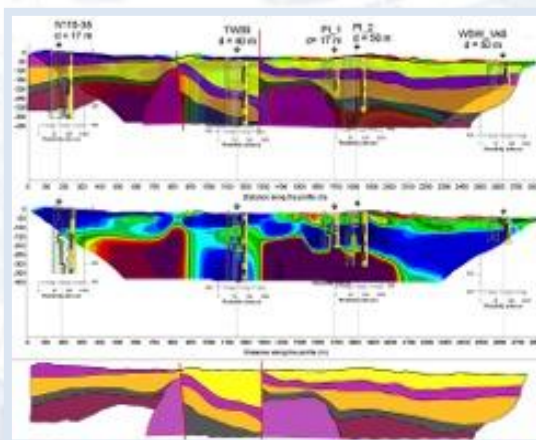
Best signal/noise ratio : we work with high technology equipment (ABEM; IRIS) and we develop our own hard & soft modules in order to enhance data quality

High Resolution

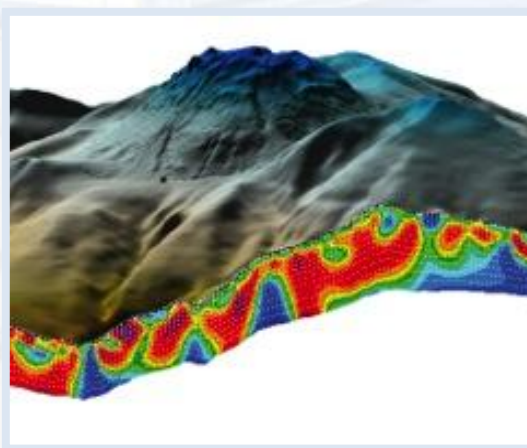
Data density is 2 to 4 times better than our competitors for similar surveys at unbeatable depth

Field Team

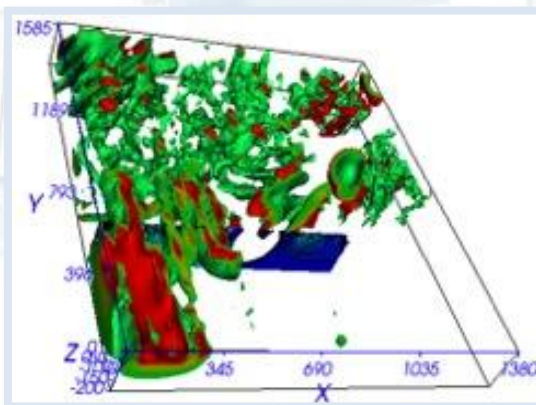
Our skilled geophysicists and engineers (PhD, MSc) are present on the field for permanent data quality control and calibration checking, reducing survey delays in remote areas



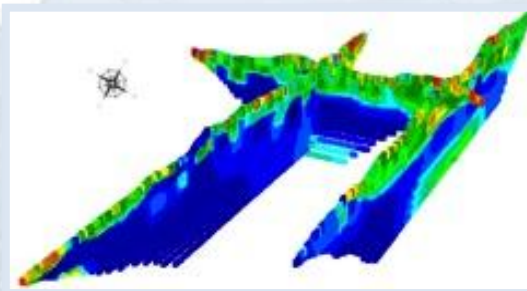
Heavy oil in Madagascar with joint inversion and 2D/3D modelling (2011)



2D ERT slice on a 3D digital elevation model (produced from our DRONE)



3D IP model in a sulfide area



3D ERT model from 2D sections

Processing

2D, 3D, 4D modeling : our powerful software solutions give the best results on the market

Joint inversion process : introducing different sets of data in the inversion process in order to enhance model accuracy

Data Compatibility

As our clients commonly use their own software suite for seismic data modeling, we have developed a code in order to provide our results into seismic data format (seggy)

Interpretation

Our team of scientists can provide the best visualizations of the layers, introducing field observations, borehole logging and core sampling data into the final model