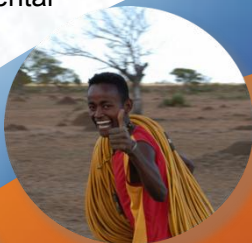


### Health, Safety, Environment and Quality

A large amount of diligence, planning and risk management is done to ensure that the health and safety of all persons involved in our surveys are protected.

Our Health, Safety and Environmental Management System meets the international standard OHSAS 18001-2007 and our quality policy respects major standards ASTM, BS and NF EN ISO.



#### Contacts

UK : Coralie Castel

[coralie@stratagem974-uk.com](mailto:coralie@stratagem974-uk.com)

+44 79 2011 3097 / Skype : coralie.castel

South Africa : Karl Facciotti

[karl@stratagem974-za.com](mailto:karl@stratagem974-za.com) +27 826 008 413

Madagascar : Maxime Caruel

[maxime@stratagem974-mg.com](mailto:maxime@stratagem974-mg.com) +261 320 720 403

Reunion Island : Eric Delcher, CEO

[delcher@stratagem974.com](mailto:delcher@stratagem974.com) +262 692 266 062

France : JN Fourcade

[contact@stratagem974.com](mailto:contact@stratagem974.com) +33 687 157 761

[www.stratagem974.com](http://www.stratagem974.com) [www.facebook.com/stratagem974](http://www.facebook.com/stratagem974)

## Geophysical Surveys for Oil and Gas Exploration



**About us** STRATAGEM974 is a company specialized in research, development and application of high tech solutions for geosciences, with a high level of skills in ground geophysics.

**Our team** of dynamic scientists and engineers have worldwide experience and a continuous link with research institutes (Colorado School of Mines, IPGP, BRGM, INGV, USGS).

**What we do :** We are specialized in geophysical surveys in remote areas. We perform data acquisition, processing and interpretation.

**Where we are & Where we go :** Our branches in the United Kingdom, South Africa, Madagascar, Reunion Island, France and Australia allow for a strong client-surveyors relationship and a rapid intervention worldwide.

### About Heavy Oil Exploration

Where seismic surveys are not able to give accurate data to delineate tar sands, we have the solutions : high density ERT, IP and MT methods

### Data Acquisition

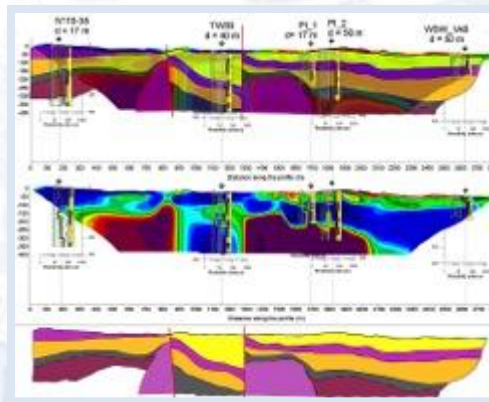
Best signal/noise ratio : we work with high technology equipment (ABEM; IRIS) and we develop our own hard & soft modules in order to enhance data quality

### High Resolution

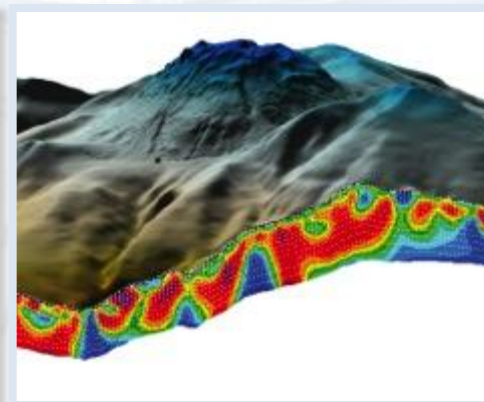
Data density is 2 to 4 times better than our competitors for similar surveys at unbeatable depth

### Field Team

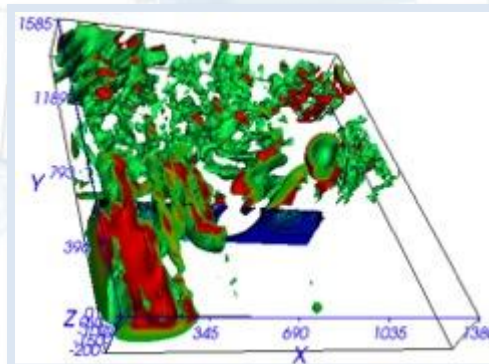
Our skilled geophysicists and engineers (PhD, MSc) are present on the field for permanent data quality control and calibration checking, reducing survey delays in remote areas



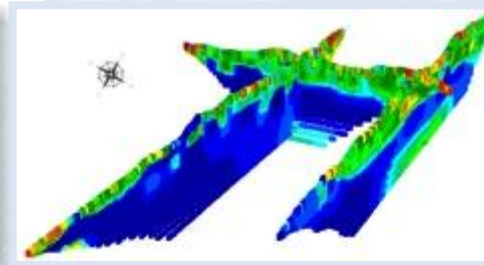
Heavy oil in Madagascar with joint inversion and 2D/3D modelling (2011)



2D ERT slice on a 3D digital elevation model (produced from our DRONE)



3D IP model



3D ERT model from 2D sections

### Processing

2D, 3D, 4D modeling : Our powerful software solutions give the best results on the market

**Joint inversion process :** Introducing different sets of data in the inversion process in order to enhance model accuracy

### Data Compatibility

As our clients commonly use their own software suite for seismic data modeling, we have developed a code in order to provide our results in **seismic data format (seg)**

### Interpretation

Our team of scientists can provide the best visualizations of the layers, introducing field observations, borehole logging and core sampling data into the final model